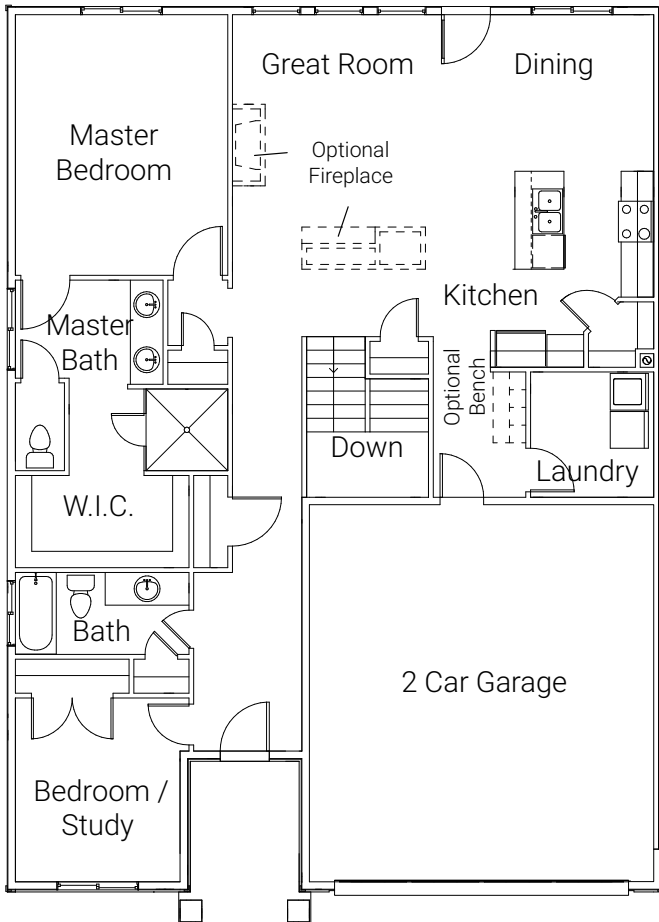


Parkside Loafer Floorplan

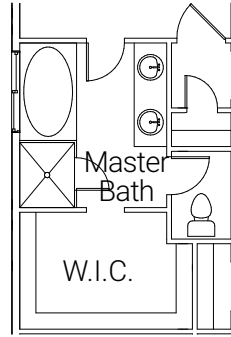
TOTAL SQ. FT. | **3,263** MAIN FLOOR SQ. FT. | **1,592**
 BASEMENT SQ. FT. | **1,671** BEDS | **2-5** BATHS | **2-3**

MAIN FLOOR

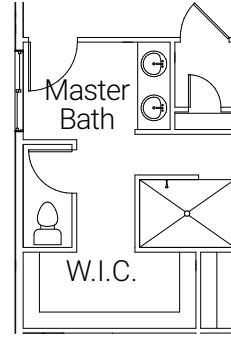


OPTIONS

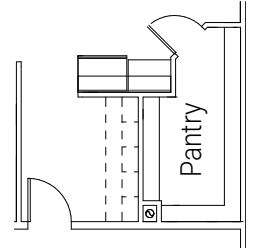
MASTER BATH OPTION 1



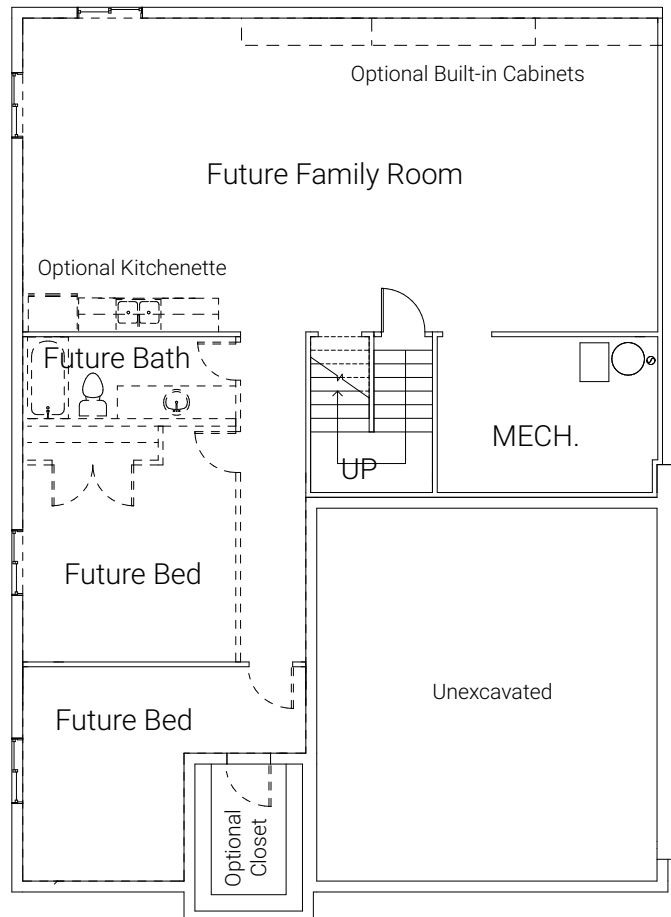
MASTER BATH OPTION 2



ENLARGED PANTRY



BASEMENT



OPTIONAL BACK WALL EXTENSIONS

